

Connah's Quay Low Carbon Power

Environmental Statement Volume III
Figure 5-3: Construction Areas

Planning Inspectorate Reference: EN010166

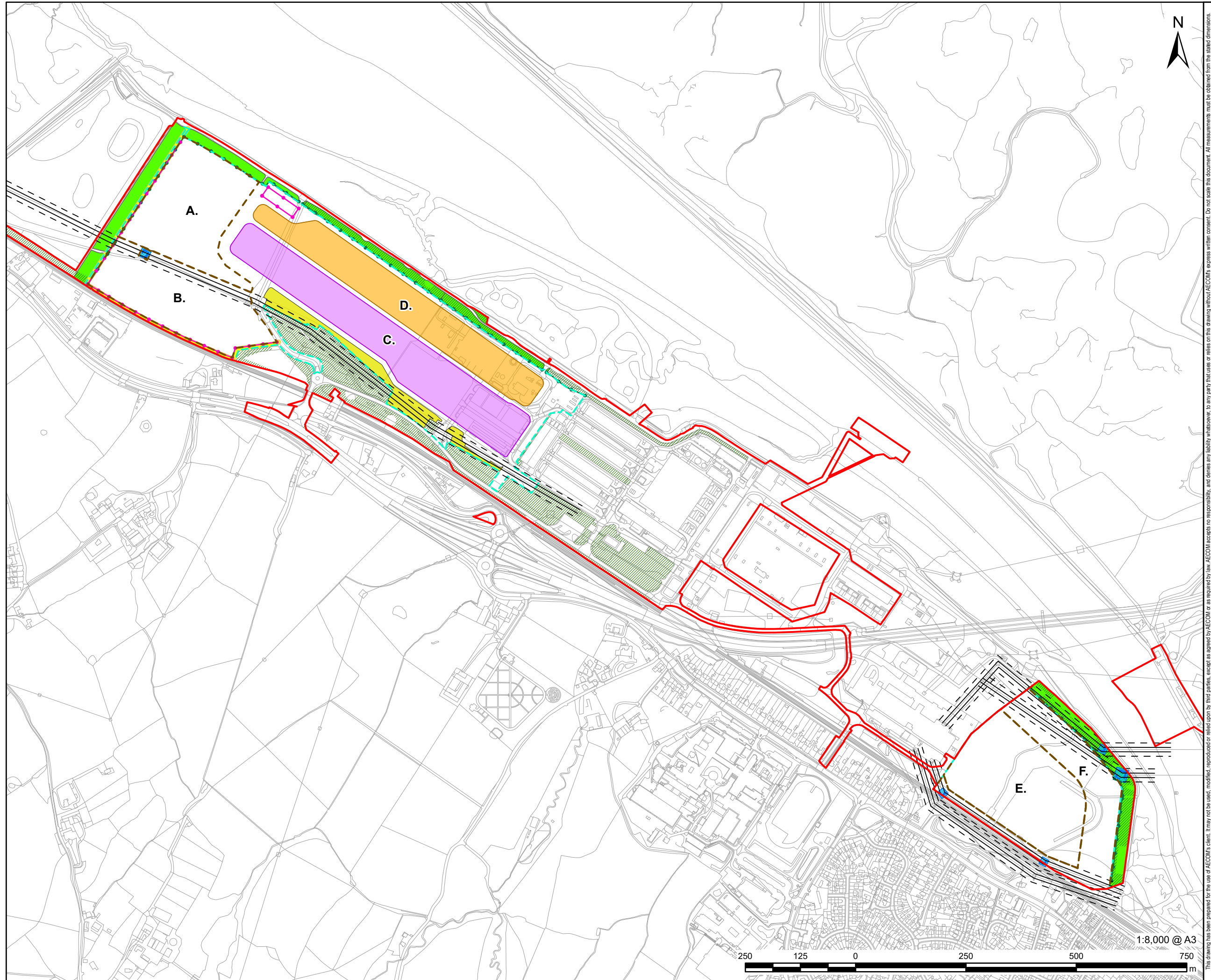
Document Reference: EN010166/APP/6.3

Planning Act 2008 (as amended)

Infrastructure Planning (Applications: Prescribed Forms and Procedure) Regulations 2009 - Regulation 5(2)(a)

Revision 00

August 2025



This drawing has been prepared for the use of AECOM's client. It may not be used, modified, reproduced or relied upon by third parties, except as agreed by AECOM or as required by law. AECOM accepts no responsibility, and denies any liability whatsoever, to any party (including us) who relies on this drawing without our express written consent. Do not scale this drawing. All measurements must be obtained from the stated dimensions.